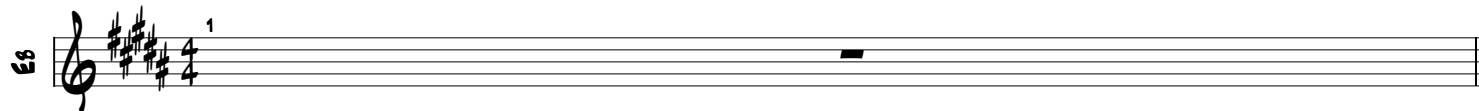


YOU COULD BE PRESIDENT

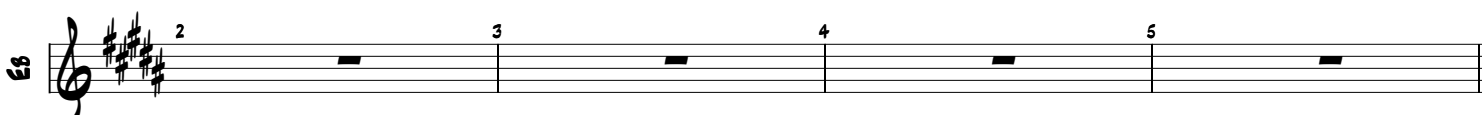
THEO KATZMAN

♩ = 87

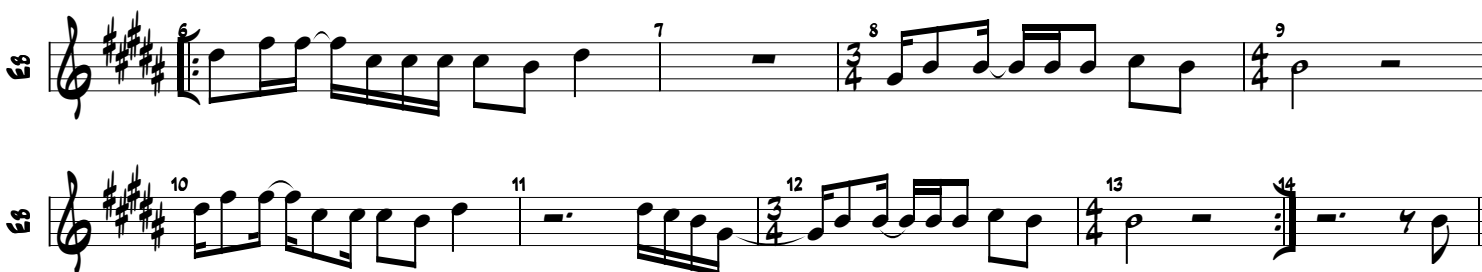
(♩ = ♩³)



INTRO



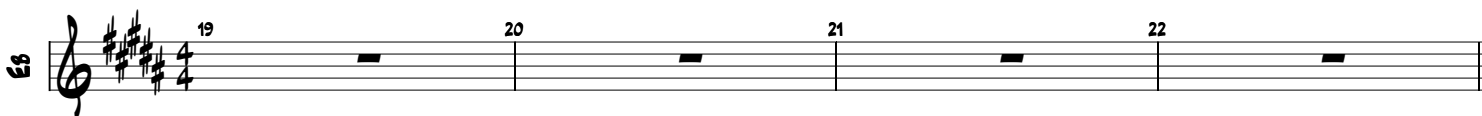
COUPLET 1



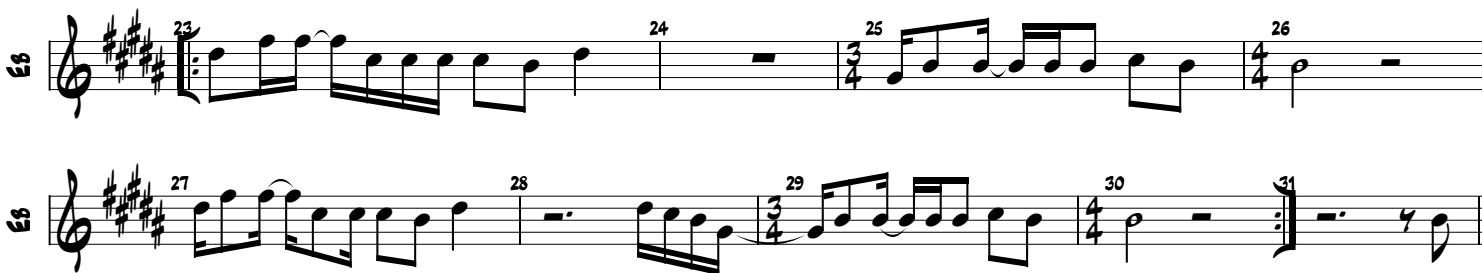
REFRAIN 1



INTERLUDE (COMME INTRO)



COUPLET 2



REFRAIN 2



SOLO

Two staves of music for the SOLO section. The first staff contains measures 36, 37, 38, and 39. The second staff contains measures 40, 41, 42, and 43. The key signature is three sharps (F#, C#, G#) and the time signature is 4/4. Each measure contains a single eighth rest.

INTERLUDE (COMME INTRO)

One staff of music for the INTERLUDE section. It contains measures 44, 45, 46, and 47. The key signature is three sharps (F#, C#, G#) and the time signature is 4/4. Each measure contains a single eighth rest.

COUPLET 3

Two staves of music for the COUPLET 3 section. The first staff contains measures 48, 49, 50, and 51. The second staff contains measures 52, 53, 54, 55, and 56. The key signature is three sharps (F#, C#, G#) and the time signature is 4/4. The melody consists of eighth and sixteenth notes.

REFRAIN 3

Two staves of music for the REFRAIN 3 section. The first staff contains measures 57, 58, 59, and 60. The second staff contains measures 61, 62, 63, and 64. The key signature is three sharps (F#, C#, G#) and the time signature is 4/4. The melody consists of eighth and sixteenth notes.

OUTRO

Two staves of music for the OUTRO section. The first staff contains measures 65, 66, 67, and 68. The second staff contains measures 69 and 70. The key signature is three sharps (F#, C#, G#) and the time signature is 4/4. The melody consists of eighth and sixteenth notes.