

RIGHT TO BE WRONG

JOSS STONE

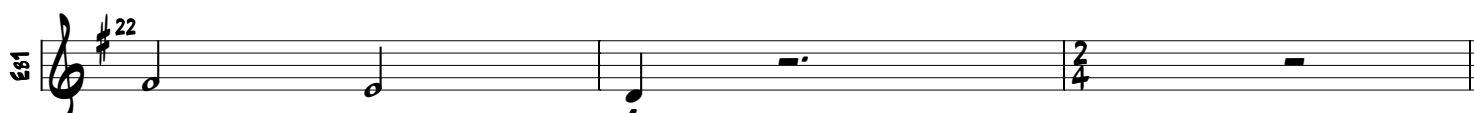
♩ = 72



COUPLET 1



REFRAIN



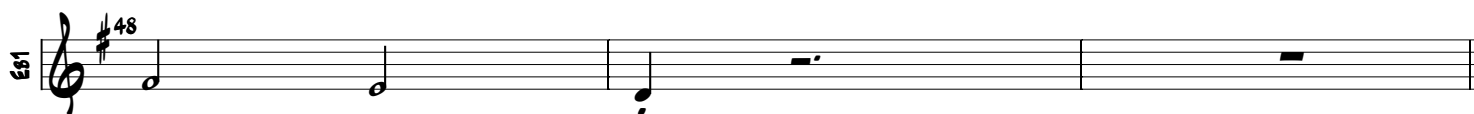
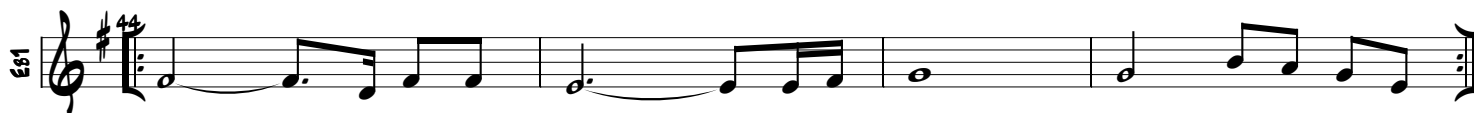
PONT



COUPLET 2



REFRAIN 2



OUTRO

51

53

55

57

59

The musical score for the OUTRO section consists of five staves, each beginning with a treble clef, a key signature of one sharp (F#), and a common time signature (C). The first four staves (measures 51-58) feature a melodic line with eighth and sixteenth notes, often beamed together, and a bass line with eighth notes. The fifth staff (measures 59-60) shows the final measure of the section, ending with a double bar line.