

# Sir Duke

- S. Wonder

From the album "Songs in the Key of Life"  
by Stevie Wonder (1976)

Bass part by  
Nathan Watts

**Intro**

♩ = 114

Elec. Bass

**(1st Verse)**

**(Bridge)**

**(Chorus)**

**(Middle 8)**

## Sir Duke

Musical notation for the bass line of 'The Rose Tree'. The key signature is D major (two sharps). The melody consists of eighth and sixteenth notes, with some measures containing triplets. The notation includes a treble clef, a key signature of two sharps, and a final double bar line.

**(2nd Verse)**

Musical notation for the bass line of "The Sound of Silence". The key signature is D major (two sharps). The notation is on a single staff with a bass clef. It consists of four measures. Above the first measure is a "B" chord symbol. Above the second measure is a "G#MIN7" chord symbol. Above the third measure is a "G9" chord symbol. Above the fourth measure is an "F#" chord symbol. The notes are: Measure 1: D2, F#2, A2, B2. Measure 2: D2, F#2, A2, B2. Measure 3: D2, F#2, A2, B2. Measure 4: D2, F#2, A2, B2.

[illegible]

**(Bridge)**

Musical notation for the bass line of 'The Sound of Silence'. The key signature is three sharps (F#, C#, G#) and the time signature is 4/4. The notation includes a double bar line and a repeat sign. The notes are: F#2, G#2, A2, B2, C#3, D3, E3, F#3, G#3, A3, B3, C#4, D4, E4, F#4, G#4, A4, B4, C#5, D5, E5, F#5, G#5, A5, B5, C#6, D6, E6, F#6, G#6, A6, B6, C#7, D7, E7, F#7, G#7, A7, B7, C#8, D8, E8, F#8, G#8, A8, B8, C#9, D9, E9, F#9, G#9, A9, B9, C#10, D10, E10, F#10, G#10, A10, B10, C#11, D11, E11, F#11, G#11, A11, B11, C#12, D12, E12, F#12, G#12, A12, B12, C#13, D13, E13, F#13, G#13, A13, B13, C#14, D14, E14, F#14, G#14, A14, B14, C#15, D15, E15, F#15, G#15, A15, B15, C#16, D16, E16, F#16, G#16, A16, B16, C#17, D17, E17, F#17, G#17, A17, B17, C#18, D18, E18, F#18, G#18, A18, B18, C#19, D19, E19, F#19, G#19, A19, B19, C#20, D20, E20, F#20, G#20, A20, B20, C#21, D21, E21, F#21, G#21, A21, B21, C#22, D22, E22, F#22, G#22, A22, B22, C#23, D23, E23, F#23, G#23, A23, B23, C#24, D24, E24, F#24, G#24, A24, B24, C#25, D25, E25, F#25, G#25, A25, B25, C#26, D26, E26, F#26, G#26, A26, B26, C#27, D27, E27, F#27, G#27, A27, B27, C#28, D28, E28, F#28, G#28, A28, B28, C#29, D29, E29, F#29, G#29, A29, B29, C#30, D30, E30, F#30, G#30, A30, B30, C#31, D31, E31, F#31, G#31, A31, B31, C#32, D32, E32, F#32, G#32, A32, B32, C#33, D33, E33, F#33, G#33, A33, B33, C#34, D34, E34, F#34, G#34, A34, B34, C#35, D35, E35, F#35, G#35, A35, B35, C#36, D36, E36, F#36, G#36, A36, B36, C#37, D37, E37, F#37, G#37, A37, B37, C#38, D38, E38, F#38, G#38, A38, B38, C#39, D39, E39, F#39, G#39, A39, B39, C#40, D40, E40, F#40, G#40, A40, B40, C#41, D41, E41, F#41, G#41, A41, B41, C#42, D42, E42, F#42, G#42, A42, B42, C#43, D43, E43, F#43, G#43, A43, B43, C#44, D44, E44, F#44, G#44, A44, B44, C#45, D45, E45, F#45, G#45, A45, B45, C#46, D46, E46, F#46, G#46, A46, B46, C#47, D47, E47, F#47, G#47, A47, B47, C#48, D48, E48, F#48, G#48, A48, B48, C#49, D49, E49, F#49, G#49, A49, B49, C#50, D50, E50, F#50, G#50, A50, B50, C#51, D51, E51, F#51, G#51, A51, B51, C#52, D52, E52, F#52, G#52, A52, B52, C#53, D53, E53, F#53, G#53, A53, B53, C#54, D54, E54, F#54, G#54, A54, B54, C#55, D55, E55, F#55, G#55, A55, B55, C#56, D56, E56, F#56, G#56, A56, B56, C#57, D57, E57, F#57, G#57, A57, B57, C#58, D58, E58, F#58, G#58, A58, B58, C#59, D59, E59, F#59, G#59, A59, B59, C#60, D60, E60, F#60, G#60, A60, B60, C#61, D61, E61, F#61, G#61, A61, B61, C#62, D62, E62, F#62, G#62, A62, B62, C#63, D63, E63, F#63, G#63, A63, B63, C#64, D64, E64, F#64, G#64, A64, B64, C#65, D65, E65, F#65, G#65, A65, B65, C#66, D66, E66, F#66, G#66, A66, B66, C#67, D67, E67, F#67, G#67, A67, B67, C#68, D68, E68, F#68, G#68, A68, B68, C#69, D69, E69, F#69, G#69, A69, B69, C#70, D70, E70, F#70, G#70, A70, B70, C#71, D71, E71, F#71, G#71, A71, B71, C#72, D72, E72, F#72, G#72, A72, B72, C#73, D73, E73, F#73, G#73, A73, B73, C#74, D74, E74, F#74, G#74, A74, B74, C#75, D75, E75, F#75, G#75, A75, B75, C#76, D76, E76, F#76, G#76, A76, B76, C#77, D77, E77, F#77, G#77, A77, B77, C#78, D78, E78, F#78, G#78, A78, B78, C#79, D79, E79, F#79, G#79, A79, B79, C#80, D80, E80, F#80, G#80, A80, B80, C#81, D81, E81, F#81, G#81, A81, B81, C#82, D82, E82, F#82, G#82, A82, B82, C#83, D83, E83, F#83, G#83, A83, B83, C#84, D84, E84, F#84, G#84, A84, B84, C#85, D85, E85, F#85, G#85, A85, B85, C#86, D86, E86, F#86, G#86, A86, B86, C#87, D87, E87, F#87, G#87, A87, B87, C#88, D88, E88, F#88, G#88, A88, B88, C#89, D89, E89, F#89, G#89, A89, B89, C#90, D90, E90, F#90, G#90, A90, B90, C#91, D91, E91, F#91, G#91, A91, B91, C#92, D92, E92, F#92, G#92, A92, B92, C#93, D93, E93, F#93, G#93, A93, B93, C#94, D94, E94, F#94, G#94, A94, B94, C#95, D95, E95, F#95, G#95, A95, B95, C#96, D96, E96, F#96, G#96, A96, B96, C#97, D97, E97, F#97, G#97, A97, B97, C#98, D98, E98, F#98, G#98, A98, B98, C#99, D99, E99, F#99, G#99, A99, B99, C#100, D100, E100, F#100, G#100, A100, B100, C#101, D101, E101, F#101, G#101, A101, B101, C#102, D102, E102, F#102, G#102, A102, B102, C#103, D103, E103, F#103, G#103, A103, B103, C#104, D104, E104, F#104, G#104, A104, B104, C#105, D105, E105, F#105, G#105, A105, B105, C#106, D106, E106, F#106, G#106, A106, B106, C#107, D107, E107, F#107, G#107, A107, B107, C#108, D108, E108, F#108, G#108, A108, B108, C#109, D109, E109, F#109, G#109, A109, B109, C#110, D110, E110, F#110, G#110, A110, B110, C#111, D111, E111, F#111, G#111, A111, B111, C#112, D112, E112, F#112, G#112, A112, B112, C#113, D113, E113, F#113, G#113, A113, B113, C#114, D114, E114, F#114, G#114, A114, B114, C#115, D115, E115, F#115, G#115, A115, B115, C#116, D116, E116, F#116, G#116, A116, B116, C#117, D117, E117, F#117, G#117, A117, B117, C#118, D118, E118, F#118, G#118, A118, B118, C#119, D119, E119, F#119, G#119, A119, B119, C#120, D120, E120, F#120, G#120, A120, B120, C#121, D121, E121, F#121, G#121, A121, B121, C#122, D122, E122, F#122, G#122, A122, B122, C#123, D123, E123, F#123, G#123, A123, B123, C#124, D124, E124, F#124, G#124, A124, B124, C#125, D125, E125, F#125, G#125, A125, B125, C#126, D126, E126, F#126, G#126, A126, B126, C#127, D127, E127, F#127

**(Chorus)**

8 FMIN7 EMAS7 C#MIN7 F#7

A musical score for the bass line of 'The Sound of Silence' in D major. The notation is on a single bass staff. It begins with a treble clef and a key signature of two sharps (F# and C#). The tempo is marked 'Andante'. The bass line consists of several measures, each with a chord symbol above it: B, F#m7, E#m7, C#m7, and F#7. The notes are written in a rhythmic pattern that follows the melody of the song.

A musical score for the bass line of 'The Sound of Silence' in D major. The notation is on a single staff with a bass clef. The key signature has two sharps (F# and C#). The tempo is marked 'Andante'. The score includes a key signature change from D major to D minor (indicated by a natural sign over the F#) and back to D major. Chord symbols above the staff include B, F#min7, E#m7, C#min7, and F#7. The melody consists of eighth and quarter notes, with some notes marked with an 'x'.

Musical notation for the bass line of "The Sound of Silence". The key signature is three sharps (F#, C#, G#). The notation includes a bass clef, a key signature of three sharps, and a series of notes and rests. Above the staff, there are labels for chords: B, F#MIN7, E#MAJ7, C#MIN7, and F#7. The notes are written in a style that includes some accidentals and a final measure with a whole note and a quarter rest.

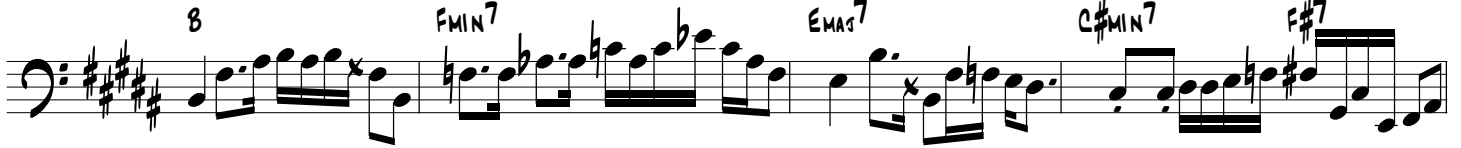
**(Middle 8)**

Musical notation for the bass line of 'The Rose Tree'. The key signature is three sharps (F#, C#, G#) and the time signature is 4/4. The notation includes various note values, rests, and a final double bar line.

# Sir Duke



## (Chorus)



## (Middle 8)

